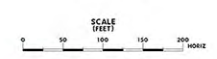
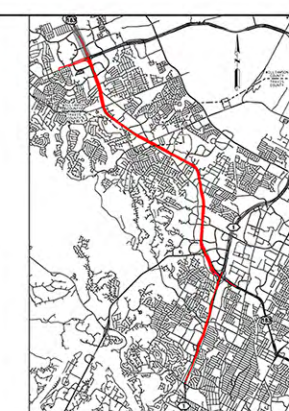


VICINITY MAP

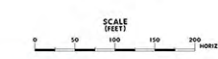


LEGEND

- OP LANE IMPROVEMENTS
- EXP LANE IMPROVEMENTS
- EXP ADJ LANE IMPROVEMENTS
- DC LANE IMPROVEMENTS
- CO LANE IMPROVEMENTS
- RAMP IMPROVEMENTS
- FRONTAGE ROAD IMPROVEMENTS
- SIDEWALK IMPROVEMENTS
- SUP IMPROVEMENTS
- DRIVEWAY IMPROVEMENTS
- BRIDGES
- TOLL ZONE
- MILL/OVERLAY
- MILL/OVERLAY ON CROSSROADS
- ROADWAY EDGE OF PAVEMENT
- RETAINING WALLS
- SIDEWALK WALLS
- NOISE BARRIERS
- TRAFFIC RAIL (TSS1)
- CONCRETE SAFETY BARRIER (CSB)
- PEDESTRIAN RAILS
- METAL BEAM GUARD FENCE
- ATTENUATORS
- CURB & GUTTER
- LANE STRIPING
- PROPOSED ROW
- EASEMENTS
- TEMPORARY CONSTRUCTION EASEMENT
- EXISTING ROW
- RAILROAD ROW
- CONTROL OF ACCESS



VICINITY MAP



LEGEND

- OP LANE IMPROVEMENTS
- EXP LANE IMPROVEMENTS
- EXP ADJ LANE IMPROVEMENTS
- DC LANE IMPROVEMENTS
- CO LANE IMPROVEMENTS
- RAMP IMPROVEMENTS
- FRONTAGE ROAD IMPROVEMENTS
- SIDEWALK IMPROVEMENTS
- SUP IMPROVEMENTS
- DRIVEWAY IMPROVEMENTS
- BRIDGES
- TOLL ZONE
- MILL/OVERLAY
- MILL/OVERLAY ON CROSSROADS
- ROADWAY EDGE OF PAVEMENT
- RETAINING WALLS
- SIDEWALK WALLS
- NOISE BARRIERS
- TRAFFIC RAIL (TSS1)
- CONCRETE SAFETY BARRIER (CSB)
- PEDESTRIAN RAILS
- METAL BEAM GUARD FENCE
- ATTENUATORS
- CURB & GUTTER
- LANE STRIPING
- PROPOSED ROW
- EASEMENTS
- TEMPORARY CONSTRUCTION EASEMENT
- EXISTING ROW
- RAILROAD ROW
- CONTROL OF ACCESS

183 NORTH MOBILITY PROJECT

 SEGMENT 1

 ROADWAY PLAN

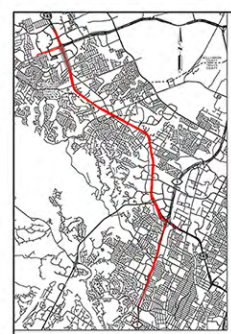
 BEGIN TO STA 829+00

183 NORTH MOBILITY PROJECT

 SEGMENT 1

 ROADWAY PLAN

 BEGIN TO STA 829+00

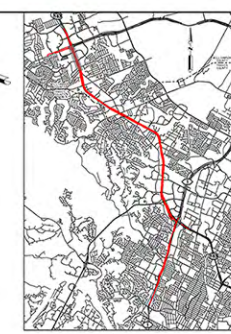
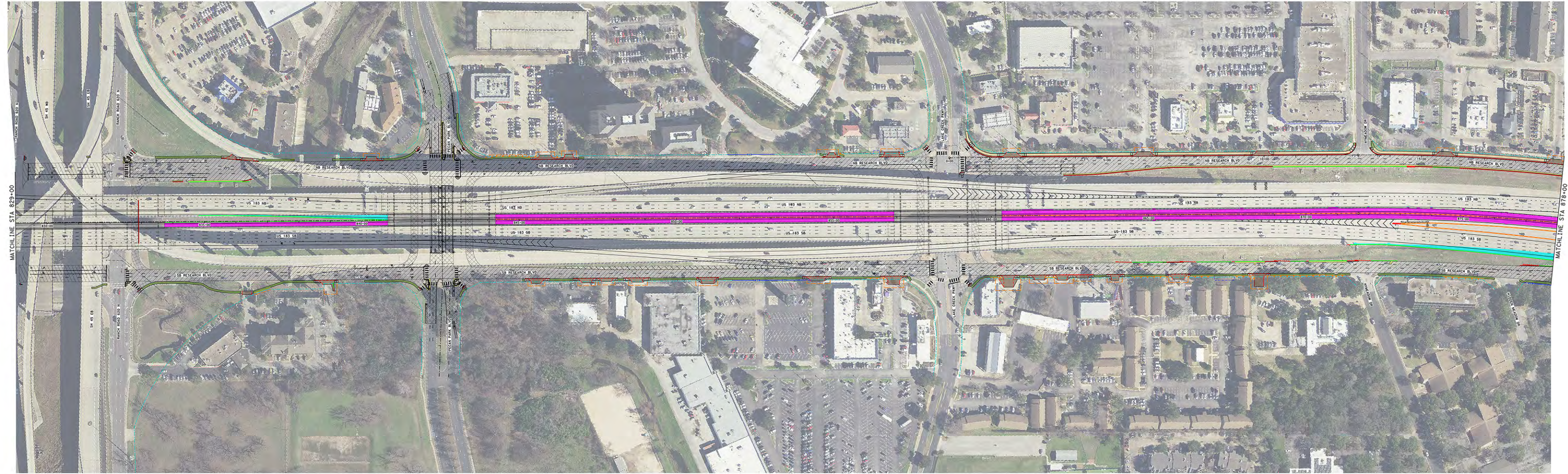


VICINITY MAP



LEGEND

- GP LANE IMPROVEMENTS
- EXP LANE IMPROVEMENTS
- EXP LANE IMPROVEMENTS
- SO LANE IMPROVEMENTS
- CO LANE IMPROVEMENTS
- RAMP IMPROVEMENTS
- FRONTAGE ROAD IMPROVEMENTS
- SIDEWALK IMPROVEMENTS
- SUP IMPROVEMENTS
- DRIVEWAY IMPROVEMENTS
- BRIDGES
- TOLL ZONE
- MELLOVERLAY ON CROSSROADS
- ROADWAY EDGE OF PAVEMENT
- RETAINING WALLS
- SIDEWALK WALLS
- NOISE BARRIERS
- TRAFFIC RAIL (ESS1)
- CONCRETE SAFETY BARRIER (CSB)
- PEDESTRIAN RAILS
- METAL BEAM GUARD FENCE
- ATTENUATORS
- CURB & GUTTER
- LANE STRIPING
- PROPOSED ROW
- EASEMENTS
- TEMPORARY CONSTRUCTION
- EXISTING ROW
- RAILROAD ROW
- CONTROL OF ACCESS



VICINITY MAP



LEGEND

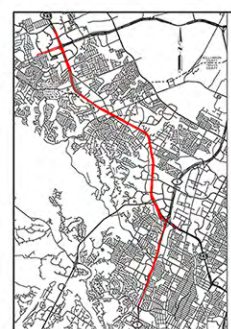
- GP LANE IMPROVEMENTS
- EXP LANE IMPROVEMENTS
- EXP LANE IMPROVEMENTS
- SO LANE IMPROVEMENTS
- CO LANE IMPROVEMENTS
- RAMP IMPROVEMENTS
- FRONTAGE ROAD IMPROVEMENTS
- SIDEWALK IMPROVEMENTS
- SUP IMPROVEMENTS
- DRIVEWAY IMPROVEMENTS
- BRIDGES
- TOLL ZONE
- MELLOVERLAY ON CROSSROADS
- ROADWAY EDGE OF PAVEMENT
- RETAINING WALLS
- SIDEWALK WALLS
- NOISE BARRIERS
- TRAFFIC RAIL (ESS1)
- CONCRETE SAFETY BARRIER (CSB)
- PEDESTRIAN RAILS
- METAL BEAM GUARD FENCE
- ATTENUATORS
- CURB & GUTTER
- LANE STRIPING
- PROPOSED ROW
- EASEMENTS
- TEMPORARY CONSTRUCTION
- EXISTING ROW
- RAILROAD ROW
- CONTROL OF ACCESS

 MOBILITY AUTHORITY
 GREAT HILLS CONSTRUCTORS
 PARSONS
 183 NORTH MOBILITY PROJECT

SEGMENT 1
 ROADWAY PLAN
 STA 829+00 TO STA 878+00
 SHEET NO. 2

 MOBILITY AUTHORITY
 GREAT HILLS CONSTRUCTORS
 PARSONS
 183 NORTH MOBILITY PROJECT

SEGMENT 1
 ROADWAY PLAN
 STA 829+00 TO STA 878+00
 SHEET NO. 2

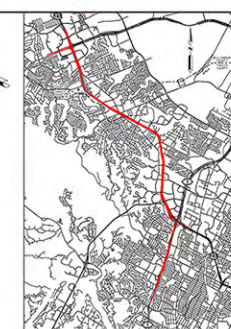
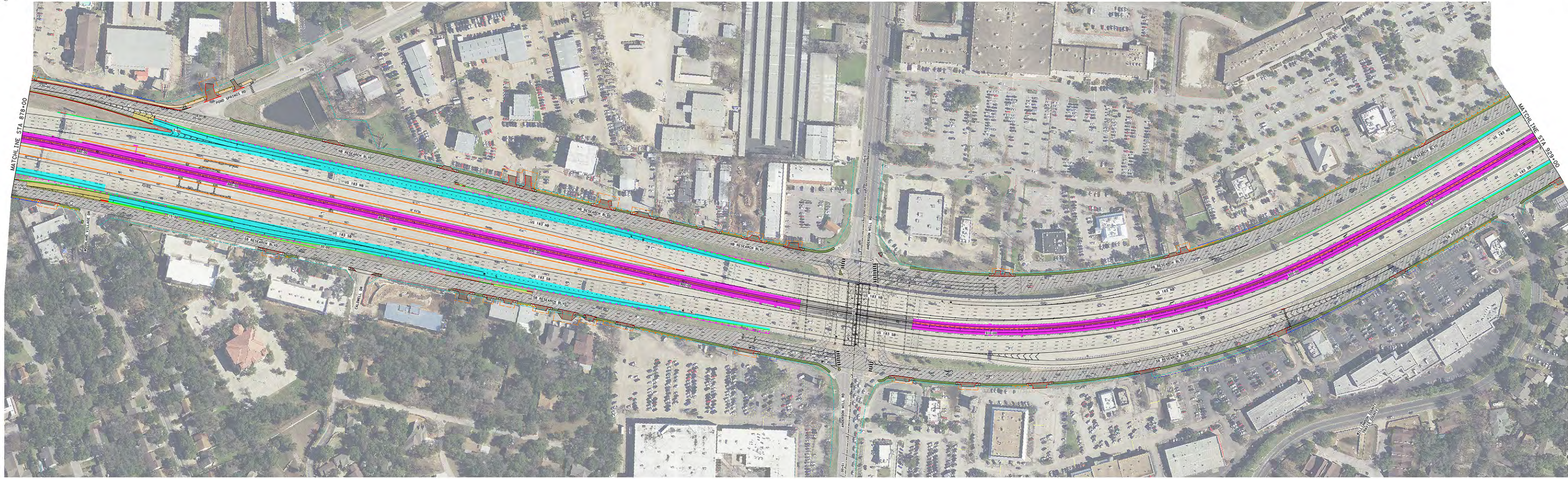


VICINITY MAP



LEGEND

- GP LANE IMPROVEMENTS
- EXP LANE IMPROVEMENTS
- DC LANE IMPROVEMENTS
- CO LANE IMPROVEMENTS
- RAMP IMPROVEMENTS
- FRONTAGE ROAD IMPROVEMENTS
- SIDEWALK IMPROVEMENTS
- SUP IMPROVEMENTS
- DRIVEWAY IMPROVEMENTS
- BRIDGES
- TOLL ZONE
- MELLOVERLAY ON CROSSROADS
- ROADWAY EDGE OF PAVEMENT
- RETAINING WALLS
- SIDEWALK WALLS
- NOISE BARRIERS
- TRAFFIC RAIL (ES&I)
- CONCRETE SAFETY BARRIER (ES&I)
- PEDESTRIAN RAILS
- METAL BEAM SOUND FENCE
- ATTENUATORS
- CURB & GUTTER
- LANE STRIPING
- PROPOSED ROW
- EXISTING ROW
- TEMPORARY CONSTRUCTION
- EXISTING ROW
- RAILROAD ROW
- CONTROL OF ACCESS



VICINITY MAP

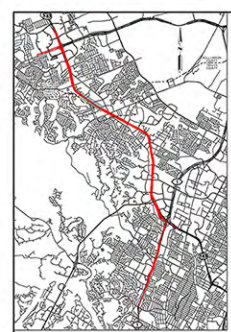


LEGEND

- GP LANE IMPROVEMENTS
- EXP LANE IMPROVEMENTS
- DC LANE IMPROVEMENTS
- CO LANE IMPROVEMENTS
- RAMP IMPROVEMENTS
- FRONTAGE ROAD IMPROVEMENTS
- SIDEWALK IMPROVEMENTS
- SUP IMPROVEMENTS
- DRIVEWAY IMPROVEMENTS
- BRIDGES
- TOLL ZONE
- MELLOVERLAY ON CROSSROADS
- ROADWAY EDGE OF PAVEMENT
- RETAINING WALLS
- SIDEWALK WALLS
- NOISE BARRIERS
- TRAFFIC RAIL (ES&I)
- CONCRETE SAFETY BARRIER (ES&I)
- PEDESTRIAN RAILS
- METAL BEAM SOUND FENCE
- ATTENUATORS
- CURB & GUTTER
- LANE STRIPING
- PROPOSED ROW
- EXISTING ROW
- TEMPORARY CONSTRUCTION
- EXISTING ROW
- RAILROAD ROW
- CONTROL OF ACCESS

MOBILITY AUTHORITY
 GREAT HILLS CONSTRUCTORS
 PARSONS
183 NORTH MOBILITY PROJECT
 SEGMENT 1
 ROADWAY PLAN
 STA 878+00 TO STA 929+00
 SHEET NO. 3

MOBILITY AUTHORITY
 GREAT HILLS CONSTRUCTORS
 PARSONS
183 NORTH MOBILITY PROJECT
 SEGMENT 1
 ROADWAY PLAN
 STA 878+00 TO STA 929+00
 SHEET NO. 3

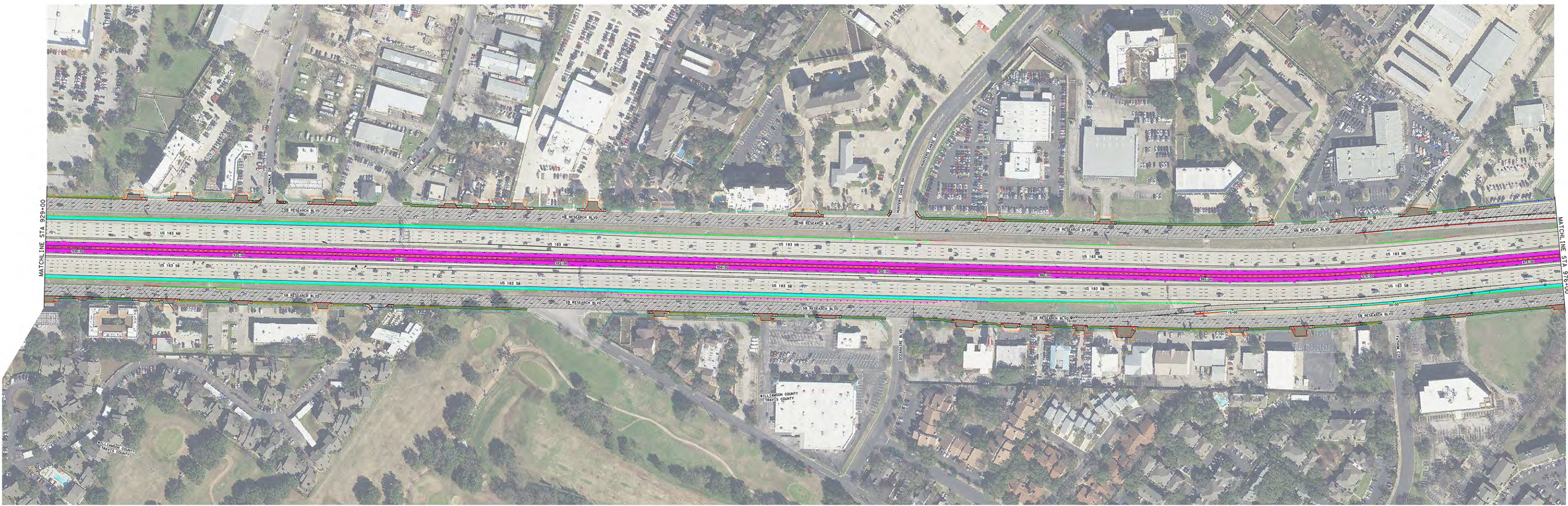


VICINITY MAP



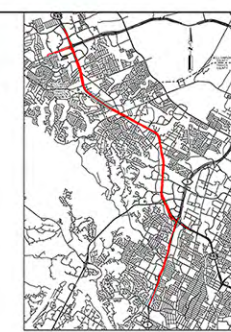
LEGEND

- GP LANE IMPROVEMENTS
- EXP LANE IMPROVEMENTS
- SO LANE IMPROVEMENTS
- CO LANE IMPROVEMENTS
- RAMP IMPROVEMENTS
- FRONTAGE ROAD IMPROVEMENTS
- SIDEWALK IMPROVEMENTS
- SUP IMPROVEMENTS
- DRIVEWAY IMPROVEMENTS
- BRIDGES
- TOLL ZONE
- MELL/OVERLAY ON CROSSROADS
- ROADWAY EDGE OF PAVEMENT
- RETAINING WALLS
- SIDEWALK WALLS
- NOISE BARRIERS
- TRAFFIC RAIL (ESS1)
- CONCRETE SAFETY BARRIER (CSB)
- PEDESTRIAN RAILS
- METAL BEAM GUARD FENCE
- ATTENUATORS
- CURB & GUTTER
- LANE STRIPING
- PROPOSED ROW
- EASEMENTS
- TEMPORARY CONSTRUCTION
- EXISTING ROW
- RAILROAD ROW
- CONTROL OF ACCESS



MATCHLINE STA 929+00

MATCHLINE STA 976+00



VICINITY MAP



LEGEND

- GP LANE IMPROVEMENTS
- EXP LANE IMPROVEMENTS
- SO LANE IMPROVEMENTS
- CO LANE IMPROVEMENTS
- RAMP IMPROVEMENTS
- FRONTAGE ROAD IMPROVEMENTS
- SIDEWALK IMPROVEMENTS
- SUP IMPROVEMENTS
- DRIVEWAY IMPROVEMENTS
- BRIDGES
- TOLL ZONE
- MELL/OVERLAY ON CROSSROADS
- ROADWAY EDGE OF PAVEMENT
- RETAINING WALLS
- SIDEWALK WALLS
- NOISE BARRIERS
- TRAFFIC RAIL (ESS1)
- CONCRETE SAFETY BARRIER (CSB)
- PEDESTRIAN RAILS
- METAL BEAM GUARD FENCE
- ATTENUATORS
- CURB & GUTTER
- LANE STRIPING
- PROPOSED ROW
- EASEMENTS
- TEMPORARY CONSTRUCTION
- EXISTING ROW
- RAILROAD ROW
- CONTROL OF ACCESS

183 NORTH MOBILITY PROJECT

SEGMENT 1
ROADWAY PLAN
STA 929+00 TO STA 976+00

SHEET NO. 4



183 NORTH MOBILITY PROJECT

SEGMENT 1
ROADWAY PLAN
STA 929+00 TO STA 976+00

SHEET NO. 4

183 NORTH MOBILITY PROJECT

SEGMENT 1
ROADWAY PLAN
STA 929+00 TO STA 976+00

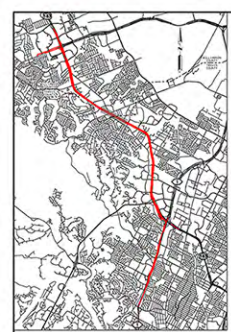
SHEET NO. 4



183 NORTH MOBILITY PROJECT

SEGMENT 1
ROADWAY PLAN
STA 929+00 TO STA 976+00

SHEET NO. 4

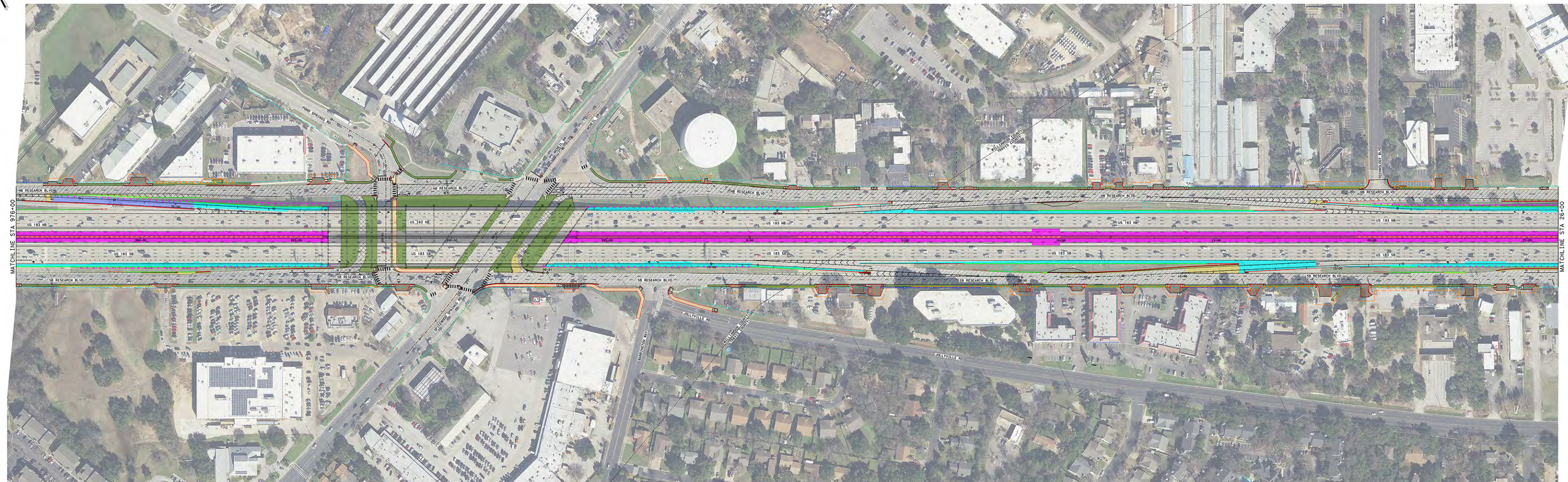


VICINITY MAP

SCALE
FEET
0 50 100 200

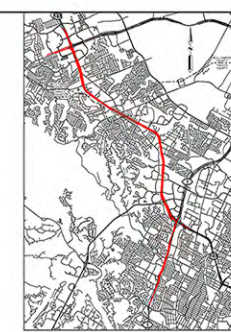
LEGEND

- GP LANE IMPROVEMENTS
- EXP LANE IMPROVEMENTS
- EXF LANE IMPROVEMENTS
- DC LANE IMPROVEMENTS
- CO LANE IMPROVEMENTS
- RAMP IMPROVEMENTS
- FRONTAGE ROAD IMPROVEMENTS
- SIDEWALK IMPROVEMENTS
- SUP IMPROVEMENTS
- DRIVEWAY IMPROVEMENTS
- BRIDGES
- TOLL ZONE
- MELLOVERLAY
- MELLOVERLAY ON CROSSROADS
- ROADWAY EDGE OF PAVEMENT
- RETAINING WALLS
- SIDEWALK WALLS
- NOISE BARRIERS
- TRAFFIC RAIL (ES&I)
- CONCRETE SAFETY BARRIER (ES&I)
- PEDESTRIAN RAILS
- METAL BEAM GUARD FENCE
- ATTENUATORS
- CURB & GUTTER
- LANE STRIPING
- PROPOSED ROW
- EASEMENTS
- TEMPORARY CONSTRUCTION
- EXISTING ROW
- RAILROAD ROW
- CONTROL OF ACCESS



MATCHLINE STA 976+00

MATCHLINE STA 26+00



VICINITY MAP

SCALE
FEET
0 50 100 200

LEGEND

- GP LANE IMPROVEMENTS
- EXP LANE IMPROVEMENTS
- EXF LANE IMPROVEMENTS
- DC LANE IMPROVEMENTS
- CO LANE IMPROVEMENTS
- RAMP IMPROVEMENTS
- FRONTAGE ROAD IMPROVEMENTS
- SIDEWALK IMPROVEMENTS
- SUP IMPROVEMENTS
- DRIVEWAY IMPROVEMENTS
- BRIDGES
- TOLL ZONE
- MELLOVERLAY
- MELLOVERLAY ON CROSSROADS
- ROADWAY EDGE OF PAVEMENT
- RETAINING WALLS
- SIDEWALK WALLS
- NOISE BARRIERS
- TRAFFIC RAIL (ES&I)
- CONCRETE SAFETY BARRIER (ES&I)
- PEDESTRIAN RAILS
- METAL BEAM GUARD FENCE
- ATTENUATORS
- CURB & GUTTER
- LANE STRIPING
- PROPOSED ROW
- EASEMENTS
- TEMPORARY CONSTRUCTION
- EXISTING ROW
- RAILROAD ROW
- CONTROL OF ACCESS

MOBILITY AUTHORITY
GREAT HILLS
CONSTRUCTORS
PARSONS
183 NORTH MOBILITY
PROJECT

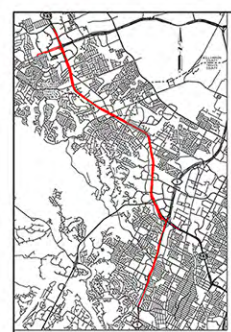
SEGMENT 1
ROADWAY PLAN
STA 976+00 TO STA 26+00

SHEET NO. 5
SHEET 5 OF 11

MOBILITY AUTHORITY
GREAT HILLS
CONSTRUCTORS
PARSONS
183 NORTH MOBILITY
PROJECT

SEGMENT 1
ROADWAY PLAN
STA 976+00 TO STA 26+00

SHEET NO. 5
SHEET 5 OF 11

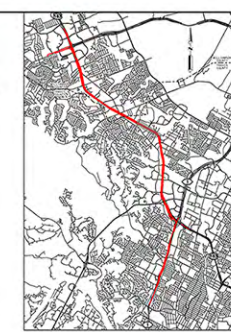
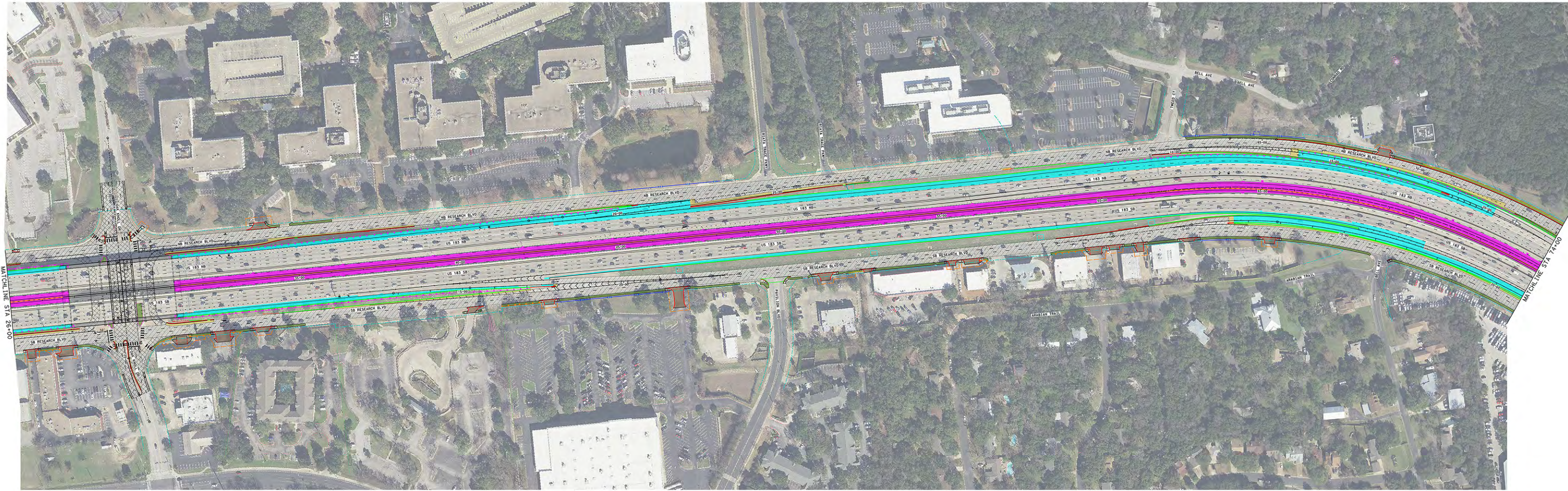


VICINITY MAP



LEGEND

- GP LANE IMPROVEMENTS
- EXP LANE IMPROVEMENTS
- DC LANE IMPROVEMENTS
- CO LANE IMPROVEMENTS
- RAMP IMPROVEMENTS
- FRONTAGE ROAD IMPROVEMENTS
- SIDEWALK IMPROVEMENTS
- SUP IMPROVEMENTS
- DRIVEWAY IMPROVEMENTS
- BRIDGES
- TOLL ZONE
- MULL/OVERLAY ON CROSSROADS
- ROADWAY EDGE OF PAVEMENT
- RETAINING WALLS
- SIDEWALK WALLS
- NOISE BARRIERS
- TRAFFIC RAIL (ESS1)
- CONCRETE SAFETY BARRIER (ESB)
- PEDESTRIAN RAILS
- METAL BEAM GUARD FENCE
- ATTENUATORS
- CURB & GUTTER
- LANE STRIPING
- PROPOSED ROW
- EASEMENTS
- TEMPORARY CONSTRUCTION
- EXISTING ROW
- RAILROAD ROW
- CONTROL OF ACCESS



VICINITY MAP

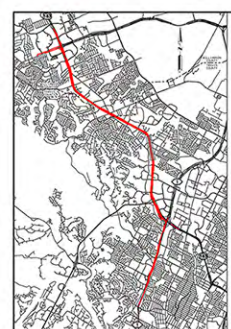


LEGEND

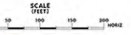
- GP LANE IMPROVEMENTS
- EXP LANE IMPROVEMENTS
- DC LANE IMPROVEMENTS
- CO LANE IMPROVEMENTS
- RAMP IMPROVEMENTS
- FRONTAGE ROAD IMPROVEMENTS
- SIDEWALK IMPROVEMENTS
- SUP IMPROVEMENTS
- DRIVEWAY IMPROVEMENTS
- BRIDGES
- TOLL ZONE
- MULL/OVERLAY ON CROSSROADS
- ROADWAY EDGE OF PAVEMENT
- RETAINING WALLS
- SIDEWALK WALLS
- NOISE BARRIERS
- TRAFFIC RAIL (ESS1)
- CONCRETE SAFETY BARRIER (ESB)
- PEDESTRIAN RAILS
- METAL BEAM GUARD FENCE
- ATTENUATORS
- CURB & GUTTER
- LANE STRIPING
- PROPOSED ROW
- EASEMENTS
- TEMPORARY CONSTRUCTION
- EXISTING ROW
- RAILROAD ROW
- CONTROL OF ACCESS

MOBILITY AUTHORITY
GREAT HILLS
CONSTRUCTORS
PARSONS
 183 NORTH MOBILITY PROJECT
 SEGMENT 1
 ROADWAY PLAN
 STA 26+00 TO STA 74+00
 SHEET NO. 6 SHEET 6 OF 11

MOBILITY AUTHORITY
GREAT HILLS
CONSTRUCTORS
PARSONS
 183 NORTH MOBILITY PROJECT
 SEGMENT 1
 ROADWAY PLAN
 STA 26+00 TO STA 74+00
 SHEET NO. 6 SHEET 6 OF 11

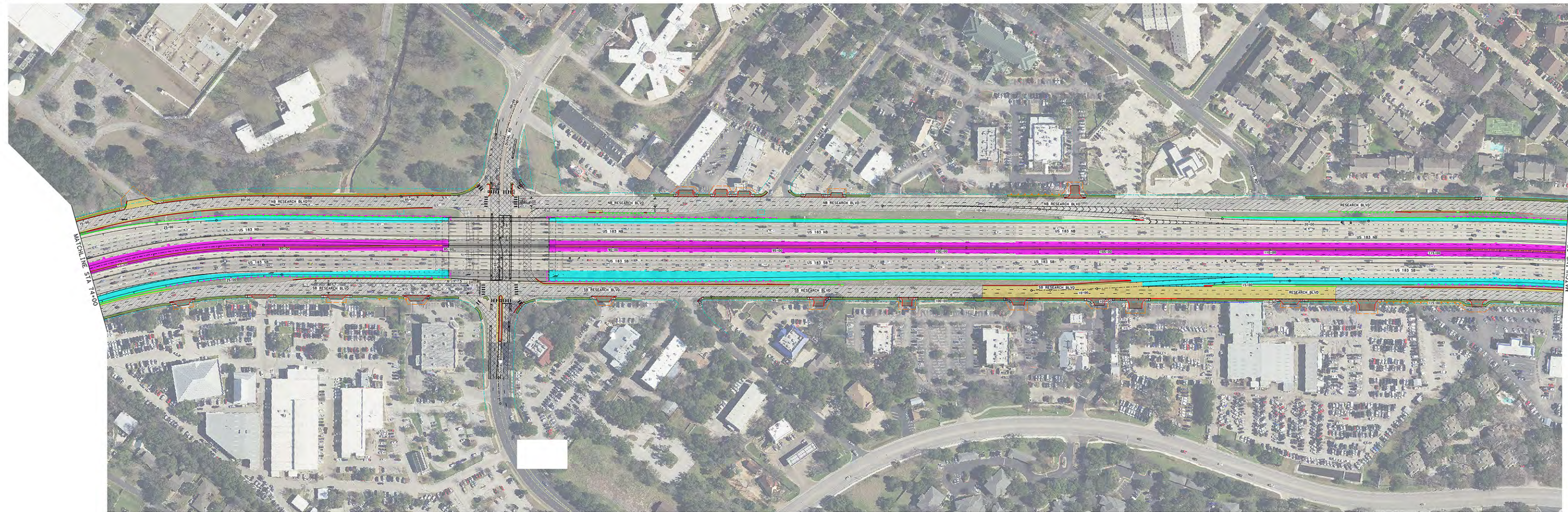


VICINITY MAP



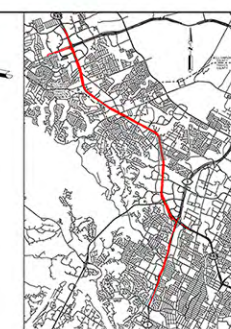
LEGEND

- GP LANE IMPROVEMENTS
- EXP LANE IMPROVEMENTS
- EXP LANE IMPROVEMENTS
- SO LANE IMPROVEMENTS
- CO LANE IMPROVEMENTS
- RAMP IMPROVEMENTS
- FRONTAGE ROAD IMPROVEMENTS
- SIDEWALK IMPROVEMENTS
- SUP IMPROVEMENTS
- DRIVEWAY IMPROVEMENTS
- BRIDGES
- TOLL ZONE
- MELLOVERLAY
- MELLOVERLAY ON CROSSROADS
- ROADWAY EDGE OF PAVEMENT
- RETAINING WALLS
- SIDEWALK WALLS
- NOISE BARRIERS
- TRAFFIC RAIL (ESS1)
- CONCRETE SAFETY BARRIER (CSB)
- PEDESTRIAN RAILS
- METAL BEAM GUARD FENCE
- ATTENUATORS
- CURB & GUTTER
- LANE STRIPING
- PROPOSED ROW
- EASEMENTS
- TEMPORARY CONSTRUCTION
- EXISTING ROW
- RAILROAD ROW
- CONTROL OF ACCESS

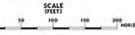


MATCHLINE STA 14+00

MATCHLINE STA 119+00



VICINITY MAP



LEGEND

- GP LANE IMPROVEMENTS
- EXP LANE IMPROVEMENTS
- EXP LANE IMPROVEMENTS
- SO LANE IMPROVEMENTS
- CO LANE IMPROVEMENTS
- RAMP IMPROVEMENTS
- FRONTAGE ROAD IMPROVEMENTS
- SIDEWALK IMPROVEMENTS
- SUP IMPROVEMENTS
- DRIVEWAY IMPROVEMENTS
- BRIDGES
- TOLL ZONE
- MELLOVERLAY
- MELLOVERLAY ON CROSSROADS
- ROADWAY EDGE OF PAVEMENT
- RETAINING WALLS
- SIDEWALK WALLS
- NOISE BARRIERS
- TRAFFIC RAIL (ESS1)
- CONCRETE SAFETY BARRIER (CSB)
- PEDESTRIAN RAILS
- METAL BEAM GUARD FENCE
- ATTENUATORS
- CURB & GUTTER
- LANE STRIPING
- PROPOSED ROW
- EASEMENTS
- TEMPORARY CONSTRUCTION
- EXISTING ROW
- RAILROAD ROW
- CONTROL OF ACCESS

MOBILITY AUTHORITY
GREAT HILLS CONSTRUCTORS
PARSONS
183 NORTH MOBILITY PROJECT

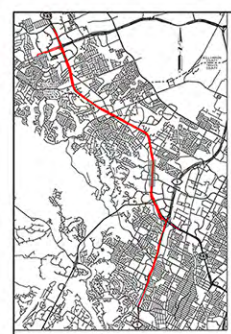
SEGMENT 1
ROADWAY PLAN
STA 14+00 TO STA 119+00

SHEET NO. 7 SHEET 2 OF 11

MOBILITY AUTHORITY
GREAT HILLS CONSTRUCTORS
PARSONS
183 NORTH MOBILITY PROJECT

SEGMENT 1
ROADWAY PLAN
STA 14+00 TO STA 119+00

SHEET NO. 7 SHEET 2 OF 11

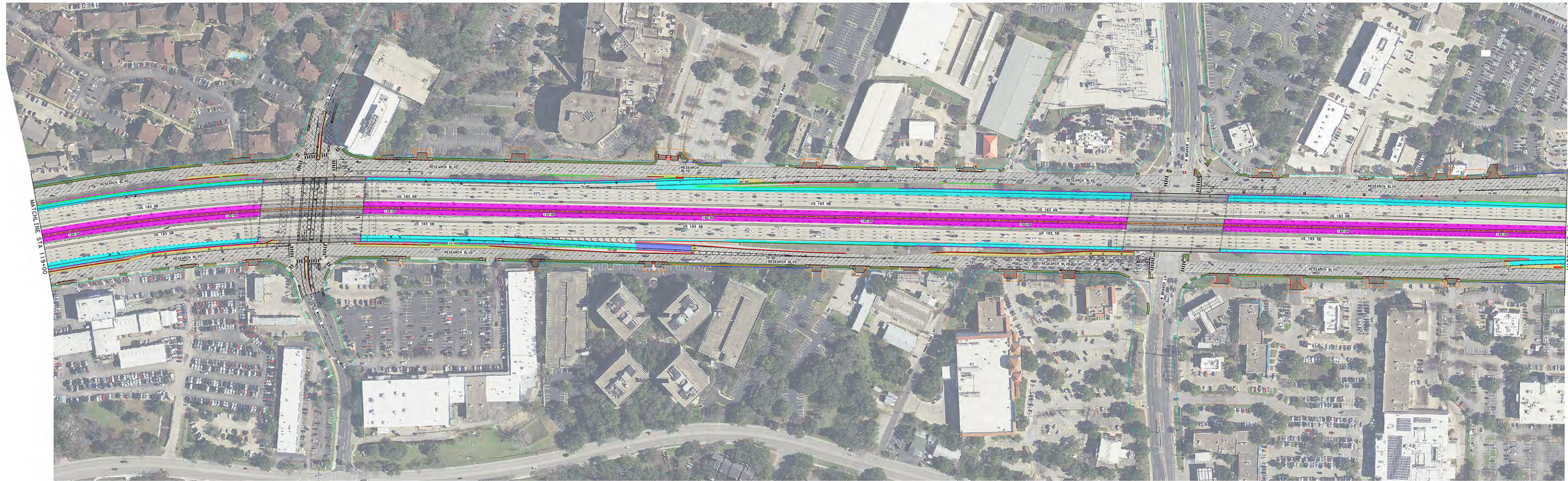


VICINITY MAP



LEGEND

- GP LANE IMPROVEMENTS
- EXP LANE IMPROVEMENTS
- EXP ADJ LANE IMPROVEMENTS
- SO LANE IMPROVEMENTS
- CO LANE IMPROVEMENTS
- RAMP IMPROVEMENTS
- FRONTAGE ROAD IMPROVEMENTS
- SIDEWALK IMPROVEMENTS
- SUP IMPROVEMENTS
- DRIVEWAY IMPROVEMENTS
- BRIDGES
- TOLL ZONE
- MELLOVERLAY ON CROSSROADS
- ROADWAY EDGE OF PAVEMENT
- RETAINING WALLS
- SIDEWALK WALLS
- NOISE BARRIERS
- TRAFFIC RAIL (ESS1)
- CONCRETE SAFETY BARRIER (CSB)
- PEDESTRIAN RAILS
- METAL BEAM GUARD FENCE
- ATTENUATORS
- CURB & GUTTER
- LANE STRIPING
- PROPOSED ROW
- EASEMENTS
- TEMPORARY CONSTRUCTION
- EXISTING ROW
- RAILROAD ROW
- CONTROL OF ACCESS



VICINITY MAP

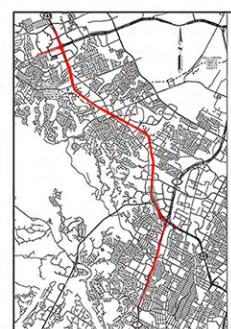


LEGEND

- GP LANE IMPROVEMENTS
- EXP LANE IMPROVEMENTS
- EXP ADJ LANE IMPROVEMENTS
- SO LANE IMPROVEMENTS
- CO LANE IMPROVEMENTS
- RAMP IMPROVEMENTS
- FRONTAGE ROAD IMPROVEMENTS
- SIDEWALK IMPROVEMENTS
- SUP IMPROVEMENTS
- DRIVEWAY IMPROVEMENTS
- BRIDGES
- TOLL ZONE
- MELLOVERLAY ON CROSSROADS
- ROADWAY EDGE OF PAVEMENT
- RETAINING WALLS
- SIDEWALK WALLS
- NOISE BARRIERS
- TRAFFIC RAIL (ESS1)
- CONCRETE SAFETY BARRIER (CSB)
- PEDESTRIAN RAILS
- METAL BEAM GUARD FENCE
- ATTENUATORS
- CURB & GUTTER
- LANE STRIPING
- PROPOSED ROW
- EASEMENTS
- TEMPORARY CONSTRUCTION
- EXISTING ROW
- RAILROAD ROW
- CONTROL OF ACCESS

MOBILITY AUTHORITY
 GREAT HILLS CONSTRUCTORS
 PARSONS
183 NORTH MOBILITY PROJECT
 SEGMENT 1
 ROADWAY PLANS
 STA 119+00 TO STA 167+00
 SHEET NO. 8 SHEET 8 OF 11

MOBILITY AUTHORITY
 GREAT HILLS CONSTRUCTORS
 PARSONS
183 NORTH MOBILITY PROJECT
 SEGMENT 1
 ROADWAY PLANS
 STA 119+00 TO STA 167+00
 SHEET NO. 8 SHEET 8 OF 11



VICINITY MAP

SCALE
0 50 100 200 FEET

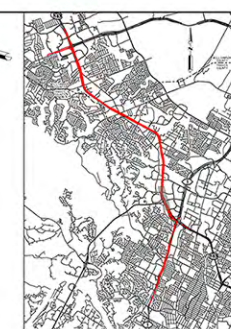
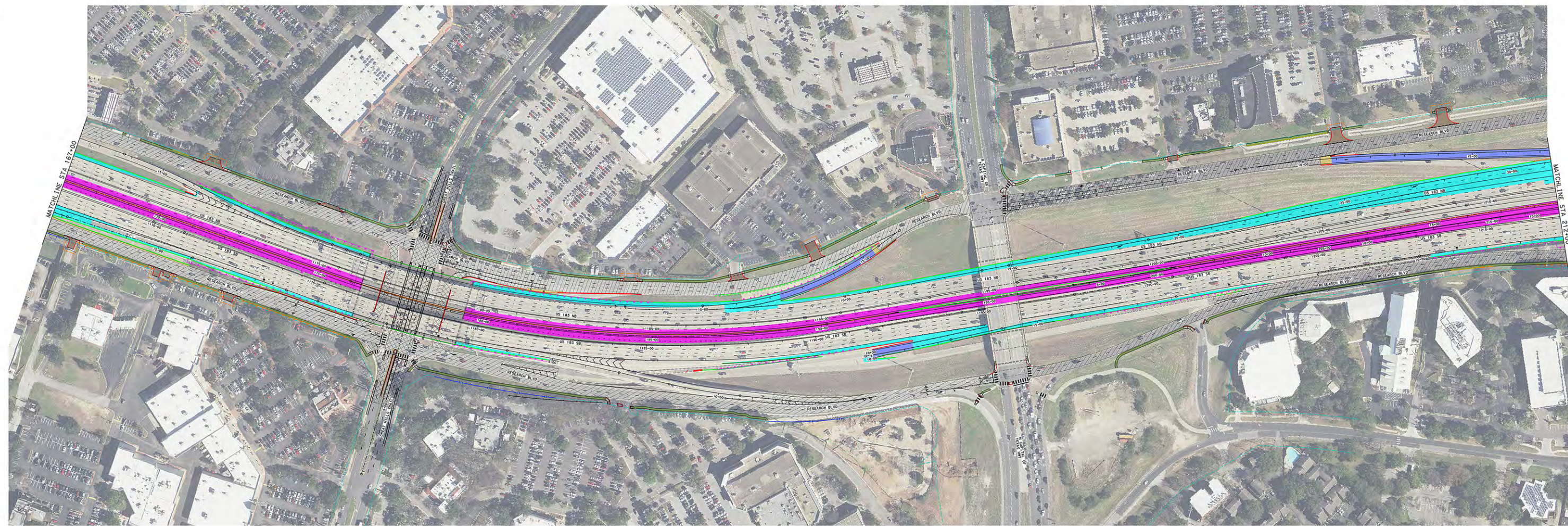
LEGEND

- GP LANE IMPROVEMENTS
- EXP LANE IMPROVEMENTS
- EXP LANE IMPROVEMENTS
- DC LANE IMPROVEMENTS
- CO LANE IMPROVEMENTS
- RAMP IMPROVEMENTS
- FRONTAGE ROAD IMPROVEMENTS
- SIDEWALK IMPROVEMENTS
- SUP IMPROVEMENTS
- DRIVEWAY IMPROVEMENTS
- BRIDGES
- TOLL ZONE
- MELL/OVERLAY ON CROSSROADS
- ROADWAY EDGE OF PAVEMENT
- RETAINING WALLS
- SIDEWALK WALLS
- NOISE BARRIERS
- TRAFFIC RAIL (ESS1)
- CONCRETE SAFETY BARRIER (CSB)
- PEDESTRIAN RAILS
- METAL BEAM GUARD FENCE
- ATTENUATORS
- CURB & GUTTER
- LANE STRIPING
- PROPOSED ROW
- EASEMENTS
- TEMPORARY CONSTRUCTION
- EXISTING ROW
- RAILROAD ROW
- CONTROL OF ACCESS

183 NORTH MOBILITY PROJECT

SEGMENT 1
ROADWAY PLAN
STA 187+00 TO STA 212+00

SHEET NO. 9 SHEET 9 OF 11



VICINITY MAP

SCALE
0 50 100 200 FEET

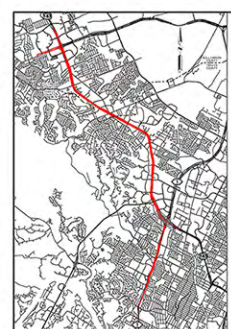
LEGEND

- GP LANE IMPROVEMENTS
- EXP LANE IMPROVEMENTS
- EXP LANE IMPROVEMENTS
- DC LANE IMPROVEMENTS
- CO LANE IMPROVEMENTS
- RAMP IMPROVEMENTS
- FRONTAGE ROAD IMPROVEMENTS
- SIDEWALK IMPROVEMENTS
- SUP IMPROVEMENTS
- DRIVEWAY IMPROVEMENTS
- BRIDGES
- TOLL ZONE
- MELL/OVERLAY ON CROSSROADS
- ROADWAY EDGE OF PAVEMENT
- RETAINING WALLS
- SIDEWALK WALLS
- NOISE BARRIERS
- TRAFFIC RAIL (ESS1)
- CONCRETE SAFETY BARRIER (CSB)
- PEDESTRIAN RAILS
- METAL BEAM GUARD FENCE
- ATTENUATORS
- CURB & GUTTER
- LANE STRIPING
- PROPOSED ROW
- EASEMENTS
- TEMPORARY CONSTRUCTION
- EXISTING ROW
- RAILROAD ROW
- CONTROL OF ACCESS

183 NORTH MOBILITY PROJECT

SEGMENT 1
ROADWAY PLAN
STA 187+00 TO STA 212+00

SHEET NO. 9 SHEET 9 OF 11

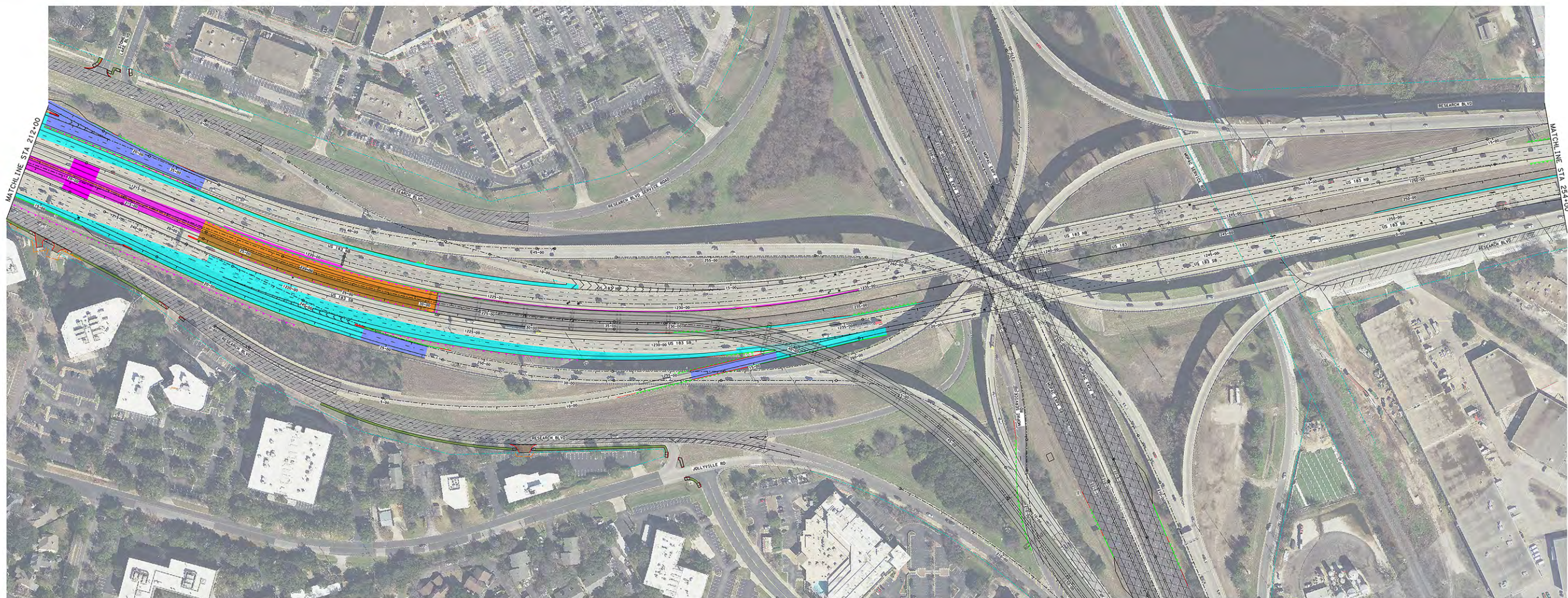


VICINITY MAP



LEGEND

- GP LANE IMPROVEMENTS
- EXP LANE IMPROVEMENTS
- DC LANE IMPROVEMENTS
- CO LANE IMPROVEMENTS
- RAMP IMPROVEMENTS
- FRONTAGE ROAD IMPROVEMENTS
- SIDEWALK IMPROVEMENTS
- SUP IMPROVEMENTS
- DRIVEWAY IMPROVEMENTS
- BRIDGES
- TOLL ZONE
- MELL/OVERLAY ON CROSSROADS
- ROADWAY EDGE OF PAVEMENT
- RETAINING WALLS
- SIDEWALK WALLS
- NOISE BARRIERS
- TRAFFIC RAIL (ES51)
- CONCRETE SAFETY BARRIER (ESB)
- PEDESTRIAN RAILS
- METAL BEAM GUARD FENCE
- ATTENUATORS
- CURB & GUTTER
- LANE STRIPING
- PROPOSED ROW
- EASEMENTS
- TEMPORARY CONSTRUCTION
- EXISTING ROW
- RAILROAD ROW
- CONTROL OF ACCESS

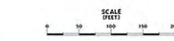


MATCHLINE STA 212+00

MATCHLINE STA 254+00



VICINITY MAP

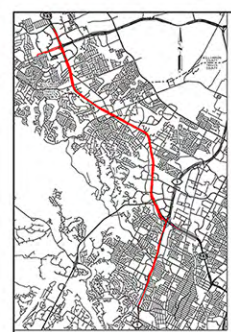


LEGEND

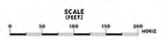
- GP LANE IMPROVEMENTS
- EXP LANE IMPROVEMENTS
- DC LANE IMPROVEMENTS
- CO LANE IMPROVEMENTS
- RAMP IMPROVEMENTS
- FRONTAGE ROAD IMPROVEMENTS
- SIDEWALK IMPROVEMENTS
- SUP IMPROVEMENTS
- DRIVEWAY IMPROVEMENTS
- BRIDGES
- TOLL ZONE
- MELL/OVERLAY ON CROSSROADS
- ROADWAY EDGE OF PAVEMENT
- RETAINING WALLS
- SIDEWALK WALLS
- NOISE BARRIERS
- TRAFFIC RAIL (ES51)
- CONCRETE SAFETY BARRIER (ESB)
- PEDESTRIAN RAILS
- METAL BEAM GUARD FENCE
- ATTENUATORS
- CURB & GUTTER
- LANE STRIPING
- PROPOSED ROW
- EASEMENTS
- TEMPORARY CONSTRUCTION
- EXISTING ROW
- RAILROAD ROW
- CONTROL OF ACCESS

MOBILITY AUTHORITY
GREAT HILLS
CONSTRUCTORS
PARSONS
 183 NORTH MOBILITY PROJECT
 SEGMENT 1
 ROADWAY PLAN
 STA 212+00 TO STA 254+00
 SHEET NO. 10

MOBILITY AUTHORITY
GREAT HILLS
CONSTRUCTORS
PARSONS
 183 NORTH MOBILITY PROJECT
 SEGMENT 1
 ROADWAY PLAN
 STA 212+00 TO STA 254+00
 SHEET NO. 10

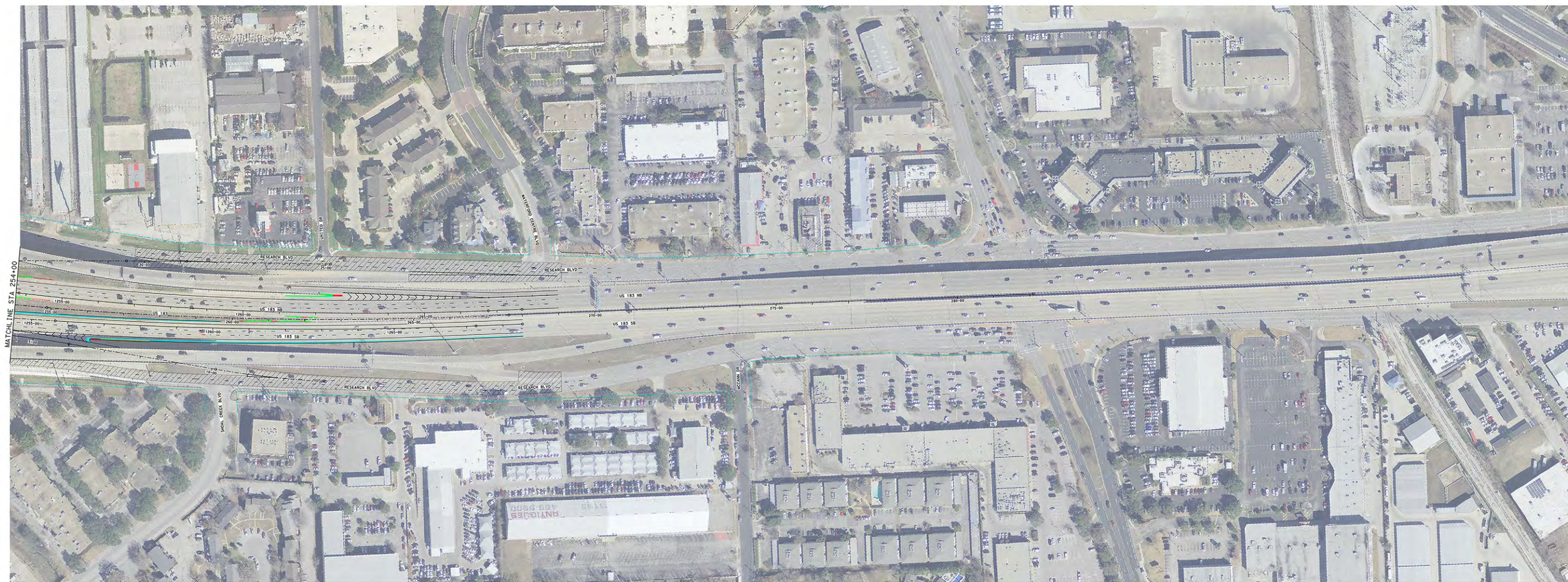


VICINITY MAP



LEGEND

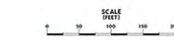
- GP LANE IMPROVEMENTS
- EXP LANE IMPROVEMENTS
- DO LANE IMPROVEMENTS
- CO LANE IMPROVEMENTS
- RAMP IMPROVEMENTS
- FRONTAGE ROAD IMPROVEMENTS
- SIDEWALK IMPROVEMENTS
- SUP IMPROVEMENTS
- DRIVEWAY IMPROVEMENTS
- BRIDGES
- TOLL ZONE
- MELLOVERLAY
- MELLOVERLAY ON CROSSROADS
- ROADWAY EDGE OF PAVEMENT
- RETAINING WALLS
- SIDEWALK WALLS
- NOISE BARRIERS
- TRAFFIC RAIL (SS1)
- CONCRETE SAFETY BARRIER (CSB)
- PEDESTRIAN RAILS
- METAL BEAM GUARD FENCE
- ATTENUATORS
- CURB & GUTTER
- LANE STRIPING
- PROPOSED ROW
- EASEMENTS
- TEMPORARY CONSTRUCTION
- EXISTING ROW
- RAILROAD ROW
- CONTROL OF ACCESS



MATCH LINE STA 254+00



VICINITY MAP



LEGEND

- GP LANE IMPROVEMENTS
- EXP LANE IMPROVEMENTS
- DO LANE IMPROVEMENTS
- CO LANE IMPROVEMENTS
- RAMP IMPROVEMENTS
- FRONTAGE ROAD IMPROVEMENTS
- SIDEWALK IMPROVEMENTS
- SUP IMPROVEMENTS
- DRIVEWAY IMPROVEMENTS
- BRIDGES
- TOLL ZONE
- MELLOVERLAY
- MELLOVERLAY ON CROSSROADS
- ROADWAY EDGE OF PAVEMENT
- RETAINING WALLS
- SIDEWALK WALLS
- NOISE BARRIERS
- TRAFFIC RAIL (SS1)
- CONCRETE SAFETY BARRIER (CSB)
- PEDESTRIAN RAILS
- METAL BEAM GUARD FENCE
- ATTENUATORS
- CURB & GUTTER
- LANE STRIPING
- PROPOSED ROW
- EASEMENTS
- TEMPORARY CONSTRUCTION
- EXISTING ROW
- RAILROAD ROW
- CONTROL OF ACCESS

183 NORTH MOBILITY PROJECT

SEGMENT 1C
ROADWAY PLAN
STA 254+00 TO END

SHEET NO. 11

183 NORTH MOBILITY PROJECT

SEGMENT 1C
ROADWAY PLAN
STA 254+00 TO END

SHEET NO. 11