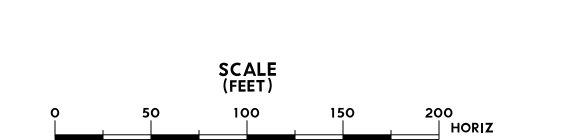
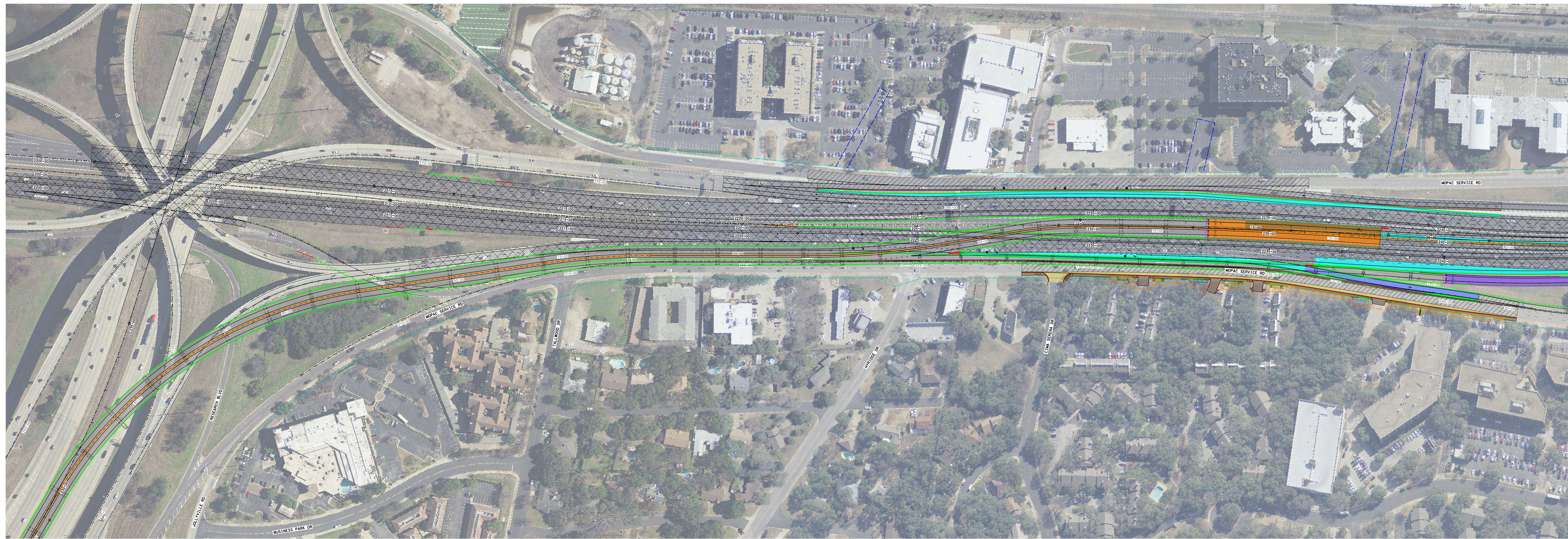


VICINITY MAP

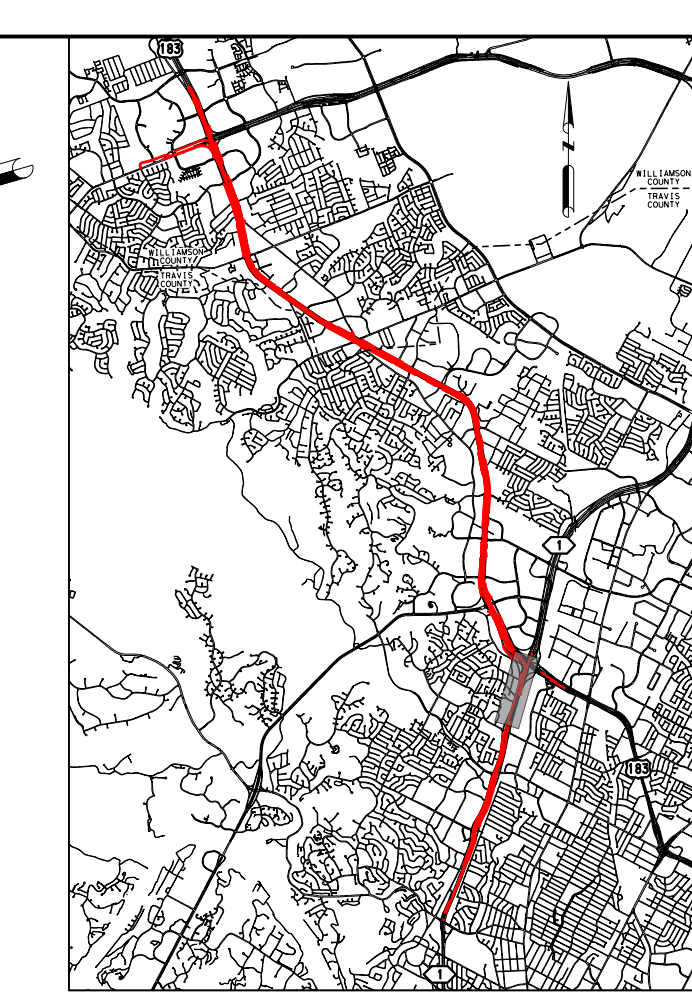


LEGEND

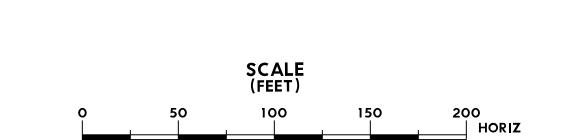
- GP LANE IMPROVEMENTS
- EXP LANE IMPROVEMENTS
- EXP AUX LANE IMPROVEMENTS
- DC LANE IMPROVEMENTS
- RAMP IMPROVEMENTS
- FRONTAGE ROAD IMPROVEMENTS
- SIDEWALK IMPROVEMENTS
- SUP IMPROVEMENTS
- DRIVEWAY IMPROVEMENTS
- BRIDGES
- TOLL ZONE
- MILL/OVERLAY ON CROSSROADS
- ROADWAY EDGE OF PAVEMENT
- RETAINING WALLS
- SIDEWALK WALLS
- NOISE BARRIERS
- TRAFFIC RAIL (TSS1)
- CONCRETE SAFETY BARRIER (CSB)
- PEDESTRIAN RAILS
- METAL BEAM GUARD FENCE
- ATTENUATORS
- CURB & GUTTER
- LANE STRIPING
- PROPOSED ROW
- EASEMENTS
- TEMPORARY CONSTRUCTION EASEMENT
- EXISTING ROW
- RAILROAD ROW
- CONTROL OF ACCESS



MATCHLINE STA. 144+00
BL CD.LP.1



VICINITY MAP

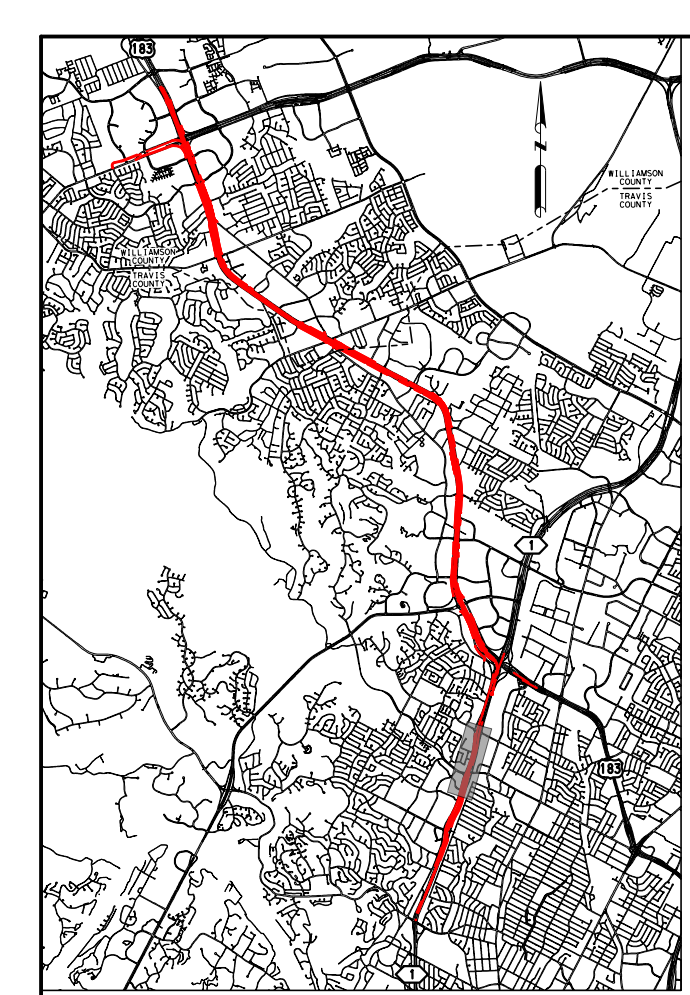


LEGEND

- GP LANE IMPROVEMENTS
- EXP LANE IMPROVEMENTS
- EXP AUX LANE IMPROVEMENTS
- DC LANE IMPROVEMENTS
- RAMP IMPROVEMENTS
- FRONTAGE ROAD IMPROVEMENTS
- SIDEWALK IMPROVEMENTS
- SUP IMPROVEMENTS
- DRIVEWAY IMPROVEMENTS
- BRIDGES
- TOLL ZONE
- MILL/OVERLAY ON CROSSROADS
- ROADWAY EDGE OF PAVEMENT
- RETAINING WALLS
- SIDEWALK WALLS
- NOISE BARRIERS
- TRAFFIC RAIL (TSS1)
- CONCRETE SAFETY BARRIER (CSB)
- PEDESTRIAN RAILS
- METAL BEAM GUARD FENCE
- ATTENUATORS
- CURB & GUTTER
- LANE STRIPING
- PROPOSED ROW
- EASEMENTS
- TEMPORARY CONSTRUCTION EASEMENT
- EXISTING ROW
- RAILROAD ROW
- CONTROL OF ACCESS

NORTH CAROLINA MOBILITY AUTHORITY
 GREAT HILLS CONSTRUCTORS
 PARSONS
183 NORTH MOBILITY PROJECT
 SEGMENT 2
 LOOP 1 - ROADWAY PLAN
 BEGIN TO STA 144+00 (BL CD.LP.1)
 SHEET NO. 02R05CHPL001 SHEET 1 OF 3

NORTH CAROLINA MOBILITY AUTHORITY
 GREAT HILLS CONSTRUCTORS
 PARSONS
183 NORTH MOBILITY PROJECT
 SEGMENT 2
 LOOP 1 - ROADWAY PLAN
 BEGIN TO STA 144+00 (BL CD.LP.1)
 SHEET NO. 02R05CHPL001 SHEET 1 OF 3

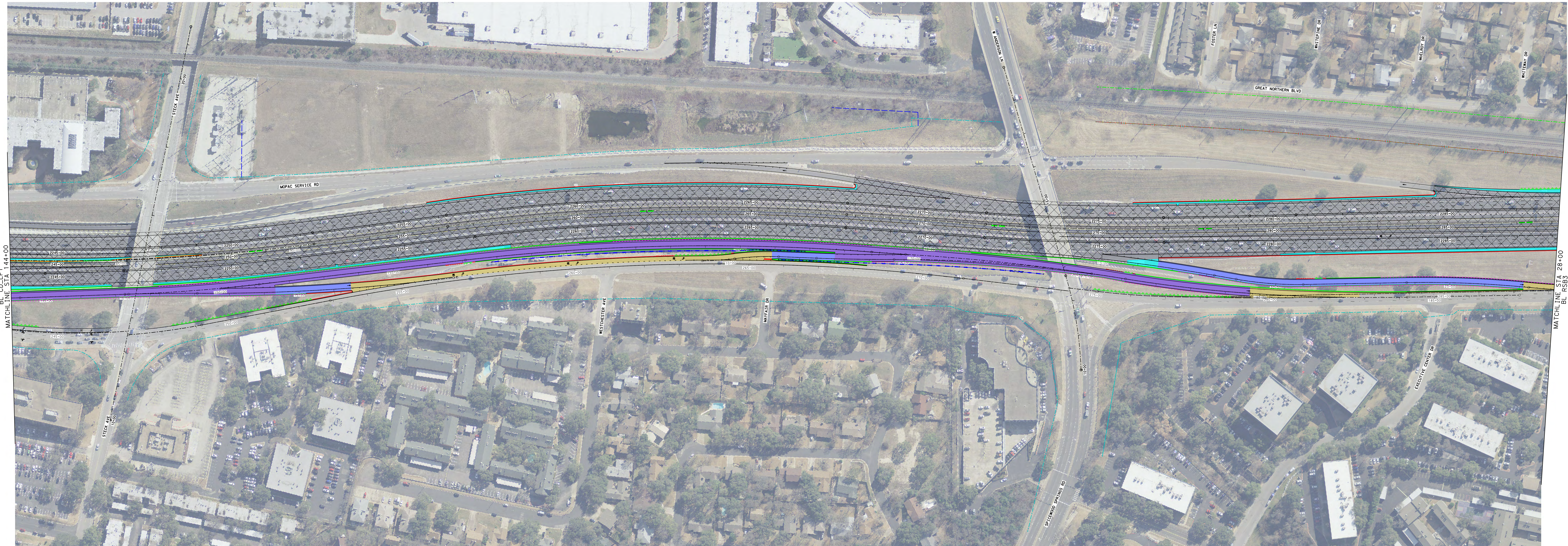


VICINITY MAP



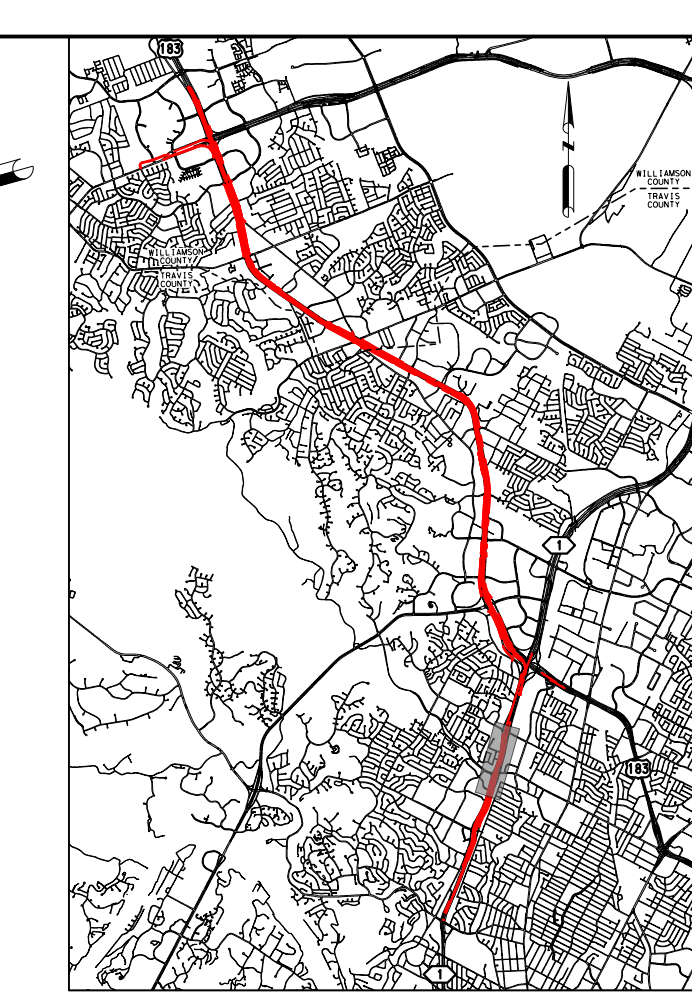
LEGEND

- GP LANE IMPROVEMENTS
- EXP LANE IMPROVEMENTS
- EXP AID LANE IMPROVEMENTS
- DC LANE IMPROVEMENTS
- CD LANE IMPROVEMENTS
- RAMP IMPROVEMENTS
- FRONTAGE ROAD IMPROVEMENTS
- SIDEWALK IMPROVEMENTS
- SUP IMPROVEMENTS
- DRIVEWAY IMPROVEMENTS
- BRIDGES
- TOLL ZONE
- MILL/OVERLAY
- MILL/OVERLAY ON CROSSROADS
- ROADWAY EDGE OF PAVEMENT
- RETAINING WALLS
- SIDEWALK WALLS
- NOISE BARRIERS
- TRAFFIC RAIL (TSS1)
- CONCRETE SAFETY BARRIER (CSB)
- PEDESTRIAN RAILS
- METAL BEAM GUARD FENCE
- ATTENUATORS
- CURB & GUTTER
- LANE STRIPING
- PROPOSED ROW
- EASEMENTS
- TEMPORARY CONSTRUCTION EASEMENT
- EXISTING ROW
- RAILROAD ROW
- CONTROL OF ACCESS

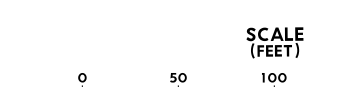


MATCHLINE STA 144+00

MATCHLINE STA 28+00



VICINITY MAP



LEGEND

- GP LANE IMPROVEMENTS
- EXP LANE IMPROVEMENTS
- EXP AID LANE IMPROVEMENTS
- DC LANE IMPROVEMENTS
- CD LANE IMPROVEMENTS
- RAMP IMPROVEMENTS
- FRONTAGE ROAD IMPROVEMENTS
- SIDEWALK IMPROVEMENTS
- SUP IMPROVEMENTS
- DRIVEWAY IMPROVEMENTS
- BRIDGES
- TOLL ZONE
- MILL/OVERLAY
- MILL/OVERLAY ON CROSSROADS
- ROADWAY EDGE OF PAVEMENT
- RETAINING WALLS
- SIDEWALK WALLS
- NOISE BARRIERS
- TRAFFIC RAIL (TSS1)
- CONCRETE SAFETY BARRIER (CSB)
- PEDESTRIAN RAILS
- METAL BEAM GUARD FENCE
- ATTENUATORS
- CURB & GUTTER
- LANE STRIPING
- PROPOSED ROW
- EASEMENTS
- TEMPORARY CONSTRUCTION EASEMENT
- EXISTING ROW
- RAILROAD ROW
- CONTROL OF ACCESS

183 NORTH MOBILITY PROJECT

 SEGMENT 2

 LOOP 1 - ROADWAY PLAN

 STA 144+00 (CD_LP1) TO

 STA 28+00 (RS83)

 SHEET NO. 02R020P1.002 SHEET 2 OF 3

183 NORTH MOBILITY PROJECT

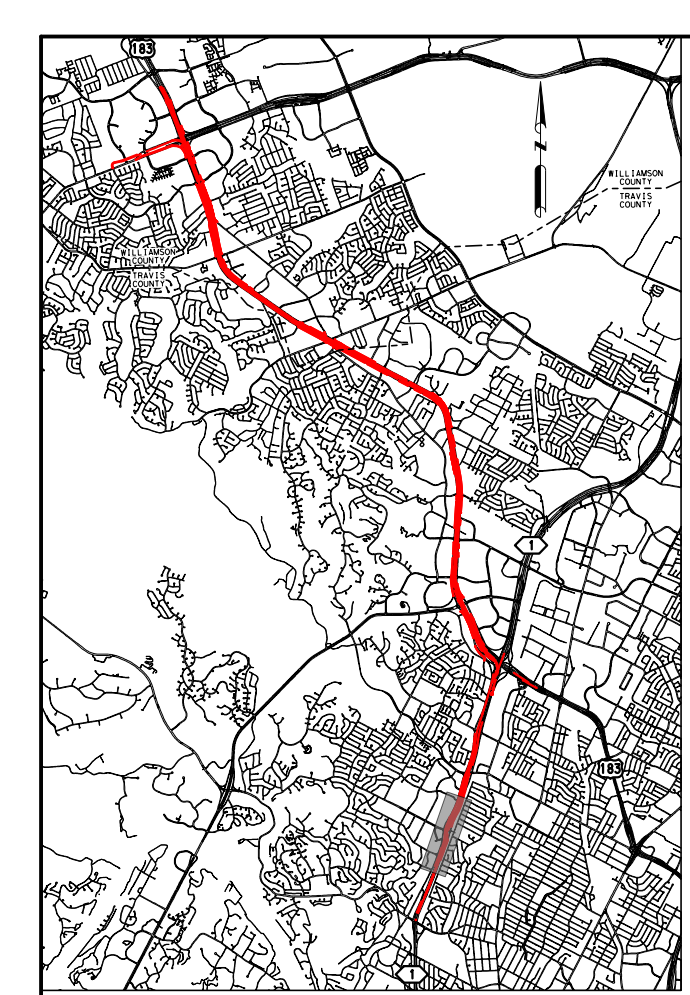
 SEGMENT 2

 LOOP 1 - ROADWAY PLAN

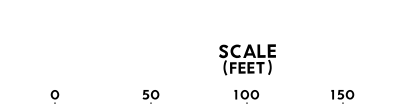
 STA 144+00 (CD_LP1) TO

 STA 28+00 (RS83)

 SHEET NO. 02R020P1.002 SHEET 2 OF 3

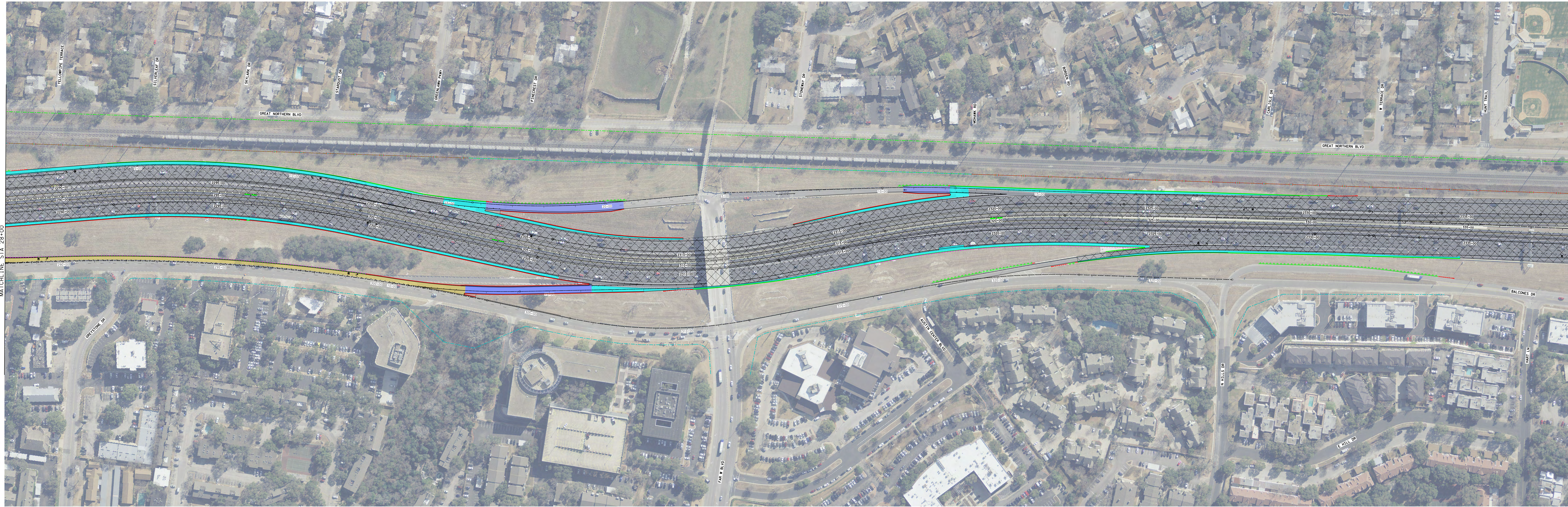


VICINITY MAP

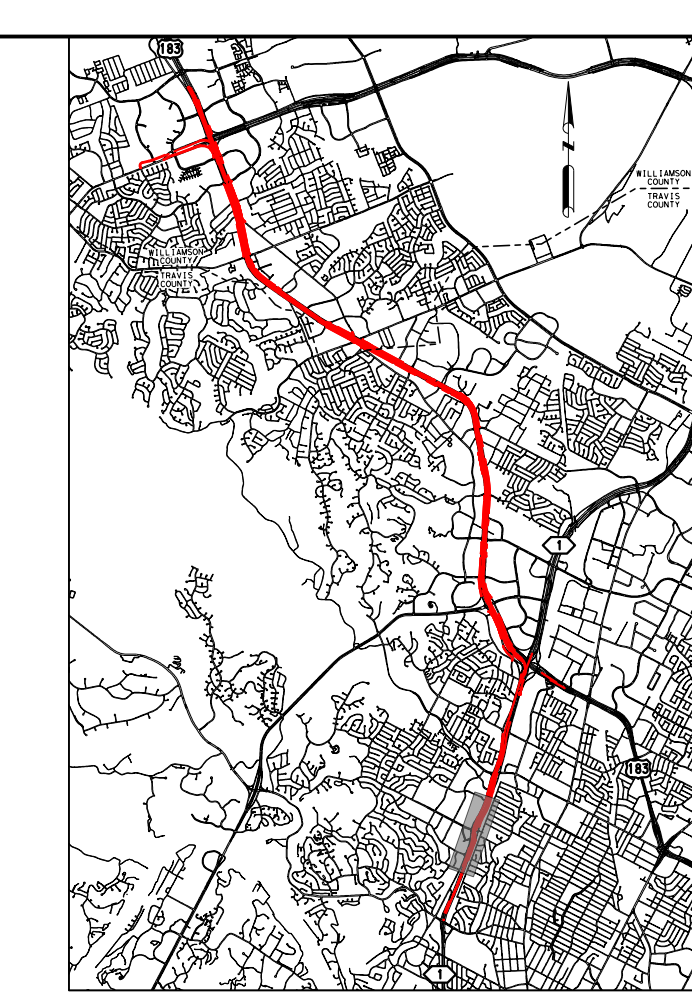


LEGEND

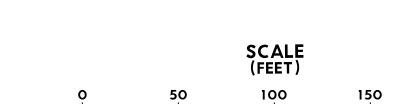
- GP LANE IMPROVEMENTS
- EXP LANE IMPROVEMENTS
- EXP AID LANE IMPROVEMENTS
- DC LANE IMPROVEMENTS
- CD LANE IMPROVEMENTS
- RAMP IMPROVEMENTS
- FRONTAGE ROAD IMPROVEMENTS
- SIDEWALK IMPROVEMENTS
- SUP IMPROVEMENTS
- DRIVEWAY IMPROVEMENTS
- BRIDGES
- TOLL ZONE
- MILL/OVERLAY ON CROSSROADS
- ROADWAY EDGE OF PAVEMENT
- RETAINING WALLS
- SIDEWALK WALLS
- NOISE BARRIERS
- TRAFFIC RAIL (TSS1)
- CONCRETE SAFETY BARRIER (CSB)
- PEDESTRIAN RAILS
- METAL BEAM GUARD FENCE
- ATTENUATORS
- CURB & GUTTER
- LANE STRIPING
- PROPOSED ROW
- EASEMENTS
- TEMPORARY CONSTRUCTION EASEMENT
- EXISTING ROW
- RAILROAD ROW
- CONTROL OF ACCESS



MATCHLINE STA 28+00



VICINITY MAP



LEGEND

- GP LANE IMPROVEMENTS
- EXP LANE IMPROVEMENTS
- EXP AID LANE IMPROVEMENTS
- DC LANE IMPROVEMENTS
- CD LANE IMPROVEMENTS
- RAMP IMPROVEMENTS
- FRONTAGE ROAD IMPROVEMENTS
- SIDEWALK IMPROVEMENTS
- SUP IMPROVEMENTS
- DRIVEWAY IMPROVEMENTS
- BRIDGES
- TOLL ZONE
- MILL/OVERLAY ON CROSSROADS
- ROADWAY EDGE OF PAVEMENT
- RETAINING WALLS
- SIDEWALK WALLS
- NOISE BARRIERS
- TRAFFIC RAIL (TSS1)
- CONCRETE SAFETY BARRIER (CSB)
- PEDESTRIAN RAILS
- METAL BEAM GUARD FENCE
- ATTENUATORS
- CURB & GUTTER
- LANE STRIPING
- PROPOSED ROW
- EASEMENTS
- TEMPORARY CONSTRUCTION EASEMENT
- EXISTING ROW
- RAILROAD ROW
- CONTROL OF ACCESS

MOBILITY AUTHORITY

GREAT HILLS CONSTRUCTORS

PARSONS

183 NORTH MOBILITY PROJECT

SEGMENT 2

LOOP 1 - ROADWAY PLANS

STA 28+00 (BL R583) TO END

SHEET NO. 02R05CHPL003 SHEET 3 OF 3

MOBILITY AUTHORITY

GREAT HILLS CONSTRUCTORS

PARSONS

183 NORTH MOBILITY PROJECT

SEGMENT 2

LOOP 1 - ROADWAY PLANS

STA 28+00 (BL R583) TO END

SHEET NO. 02R05CHPL003 SHEET 3 OF 3